

The all new  
**E-Throttle**  
by Suter Racing Technology

For Superbike / Supersport Racing Use

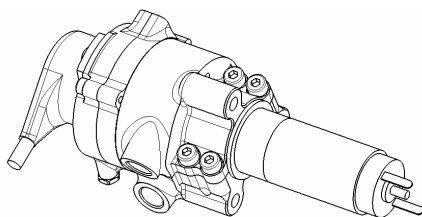
The SRT **E-Throttle** is a device specially designed for motorsport racing applications. It permits an ECU to control (to a limited degree) autonomous the position of the throttle body butterflies.

This gives the possibility of an external ride by wire system where no modification to the throttle body assembly is allowed / wanted.

The system is installed between spitted throttle cables (not part of the kit).

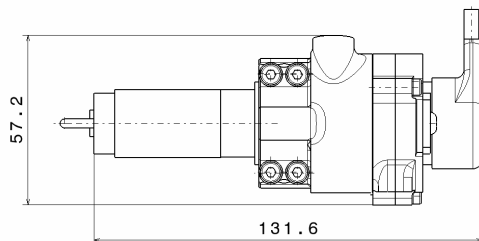


- Successfully tested by the Stiggy Honda World Superbike Team
- ECU adjusting range of  $\pm 8^\circ$  resp.  $\pm 10\%$  to the riders input
- Tested with Marelli Marvel 4 & Marelli SRT ECU's
- Adjustable relative positions of in- and outgoing cables: in steps of  $20^\circ$
- Only high-tech Motorsport components used. High quality sensor & DC motor.
- Small overall size



Price of the **E-Throttle**: 3000 € (excl. VAT)  
SRT Art. No: 041-18500

(without ECU data, cables, connectors to sensor resp. DC motor)



Of course we also provide assistance for setting up the system on different ECU's, resp. designing & delivering the needed throttle cables. Please contact us for a special offer.